

STRATE ORGANISATIONAL STRUCTURES

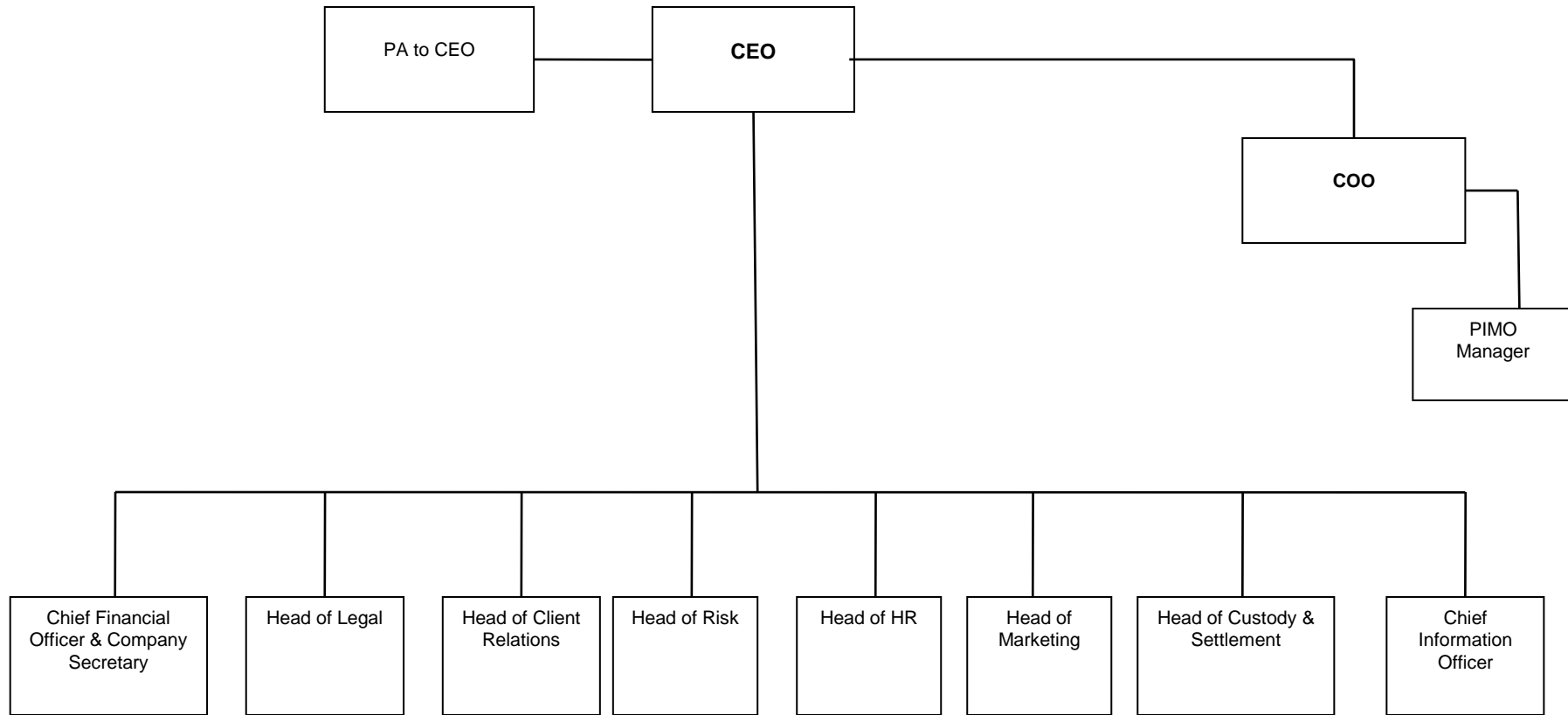
(October 2011)

Version 52

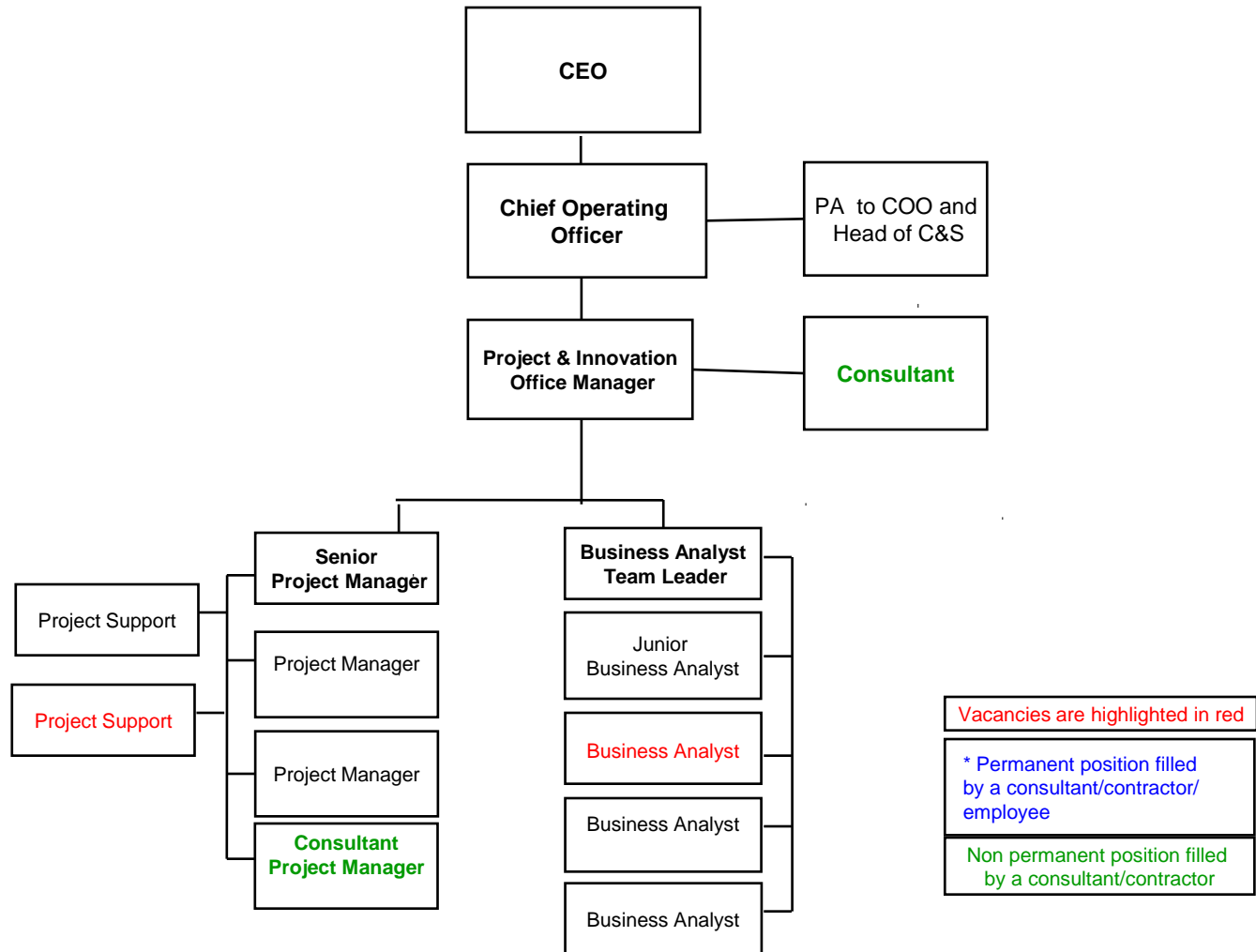


strate≡

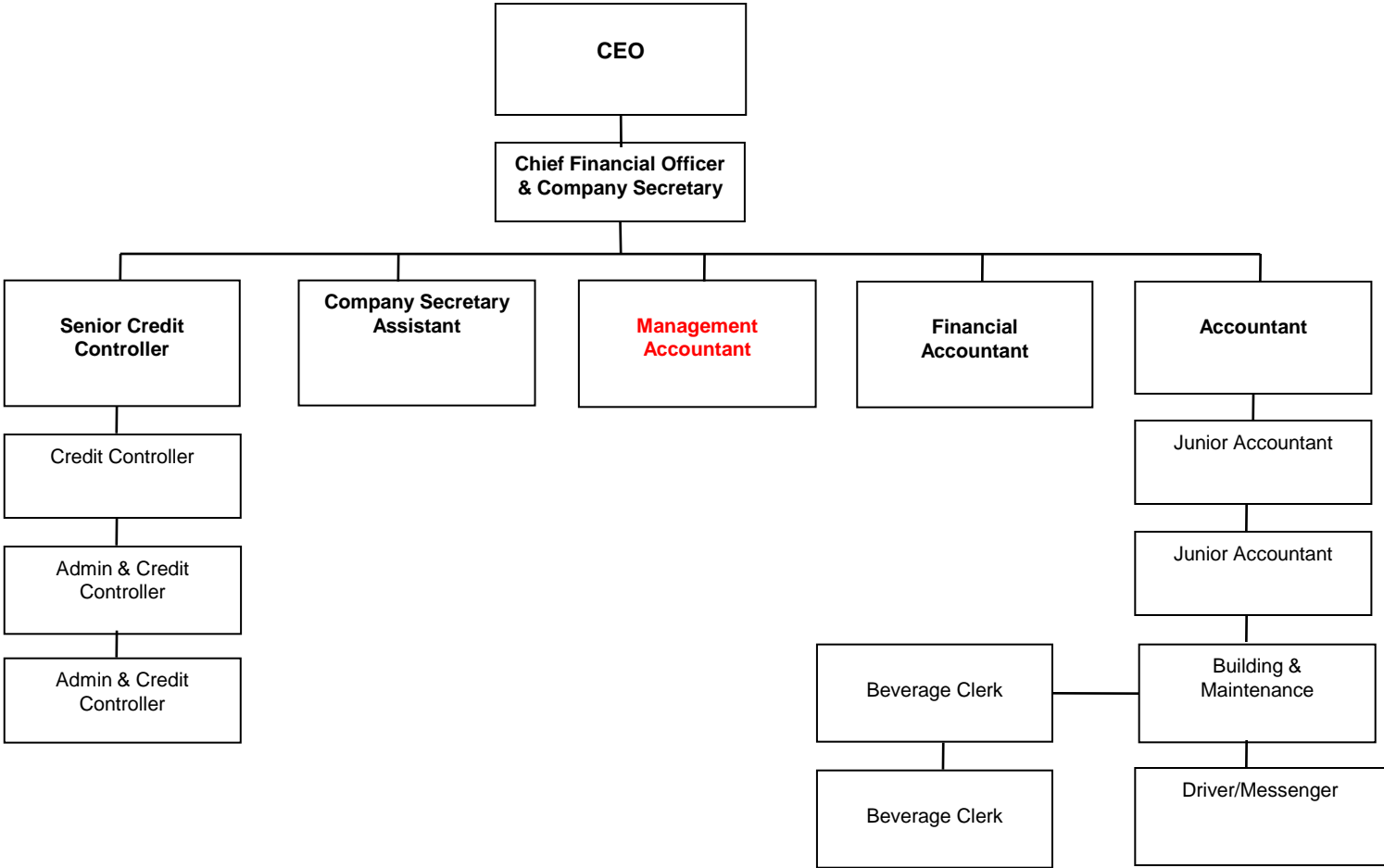
Management Structure



Project & Innovations Management Office Structure



Finance Division

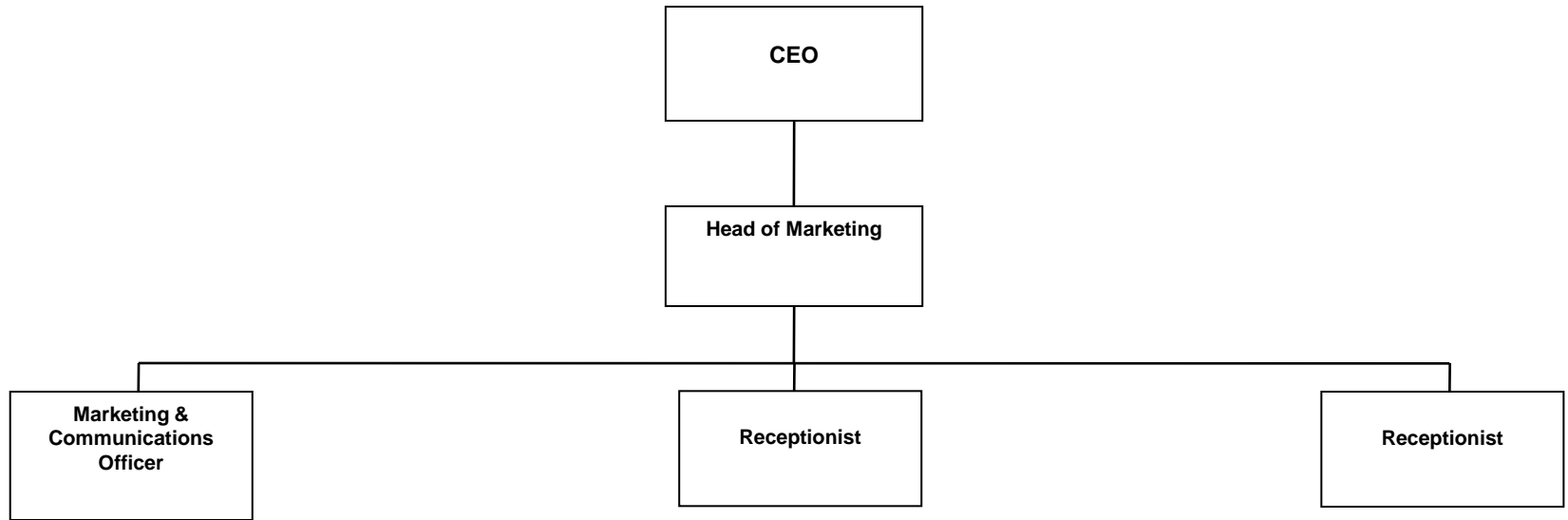


Vacancies are highlighted in red

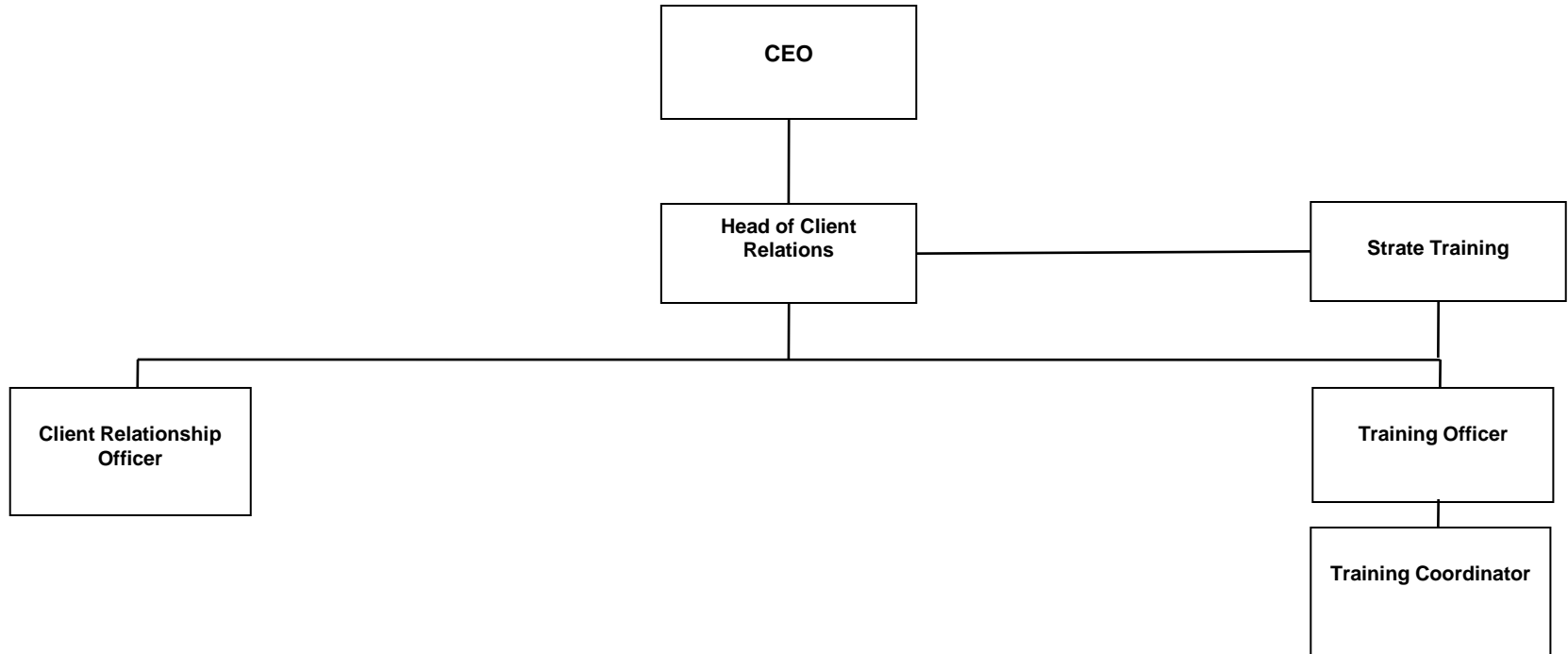
* Permanent position filled by a consultant/contractor

* Non permanent position filled by a consultant/contractor

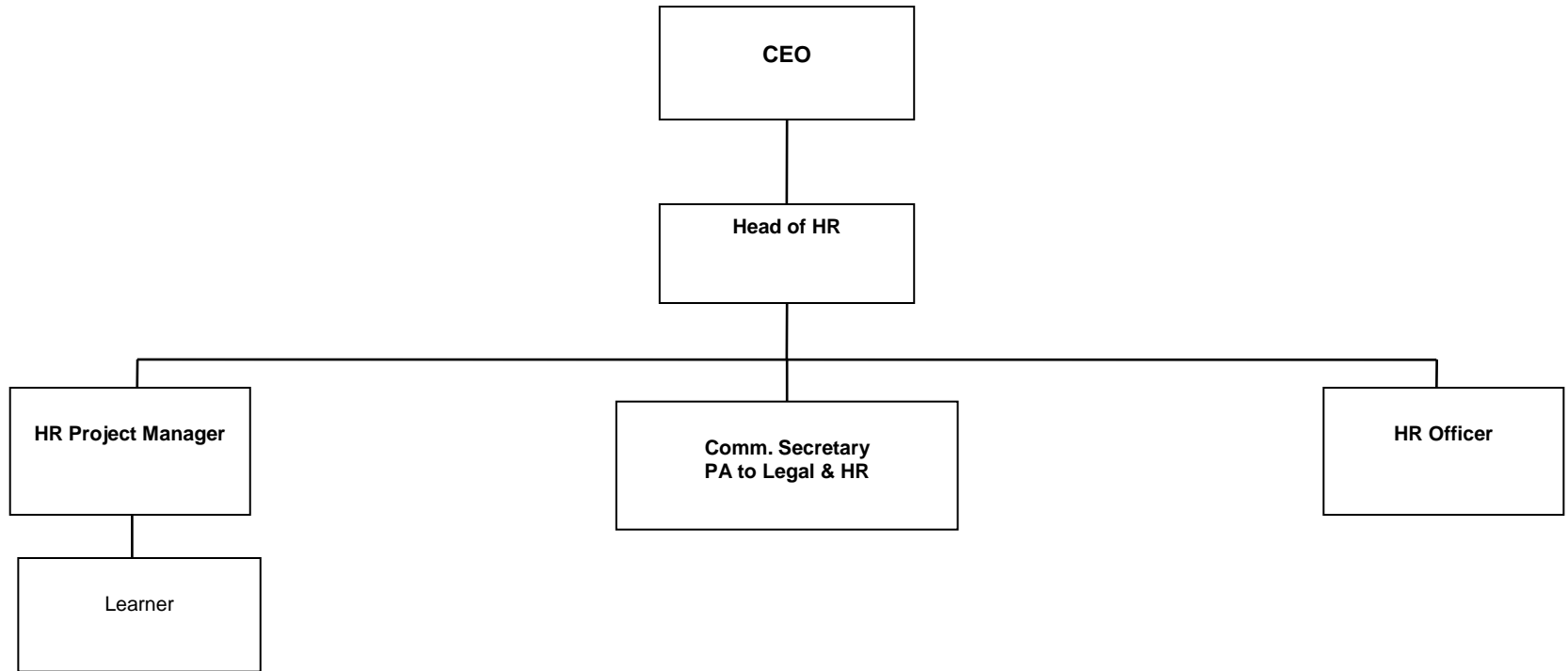
Marketing Division



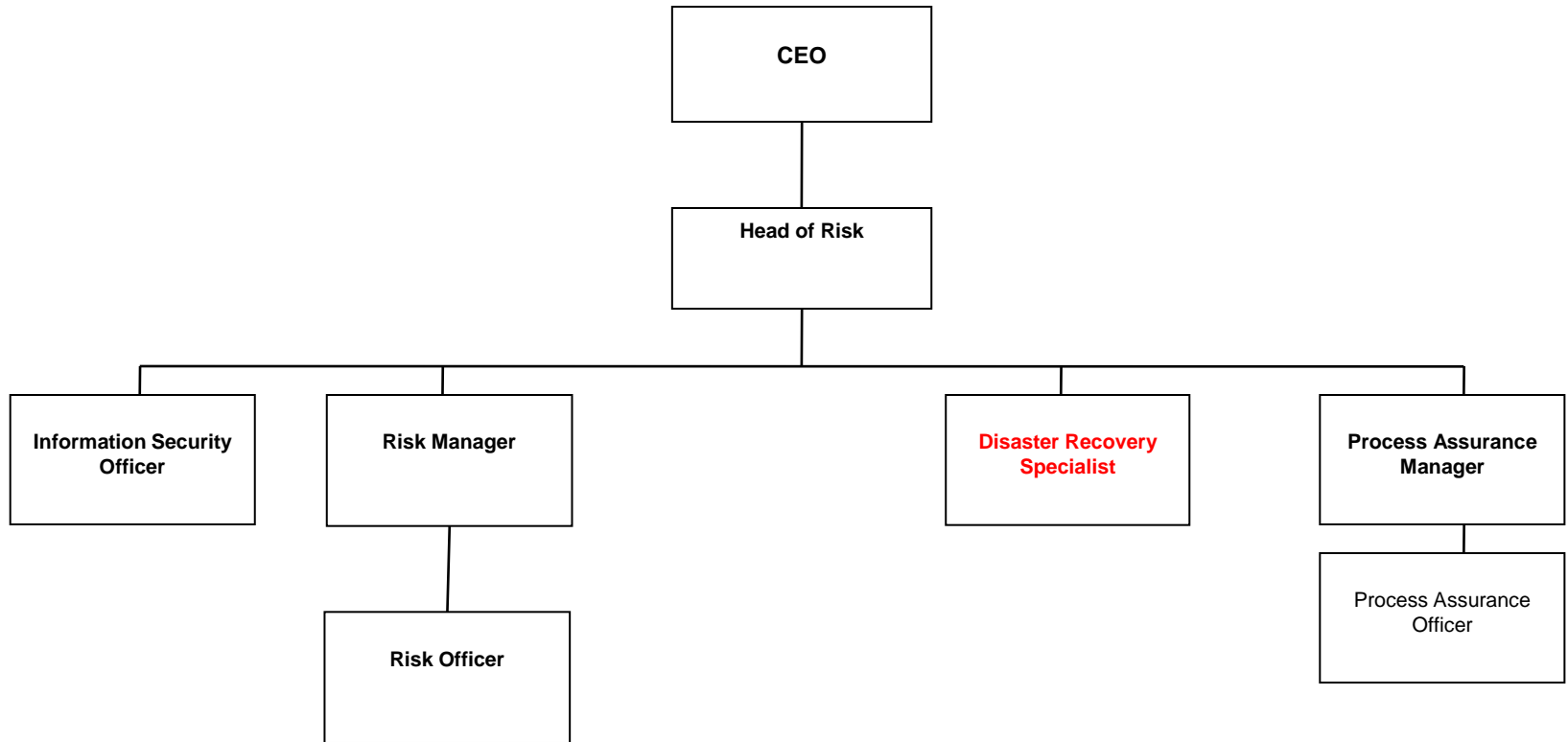
Client Relations & Sales

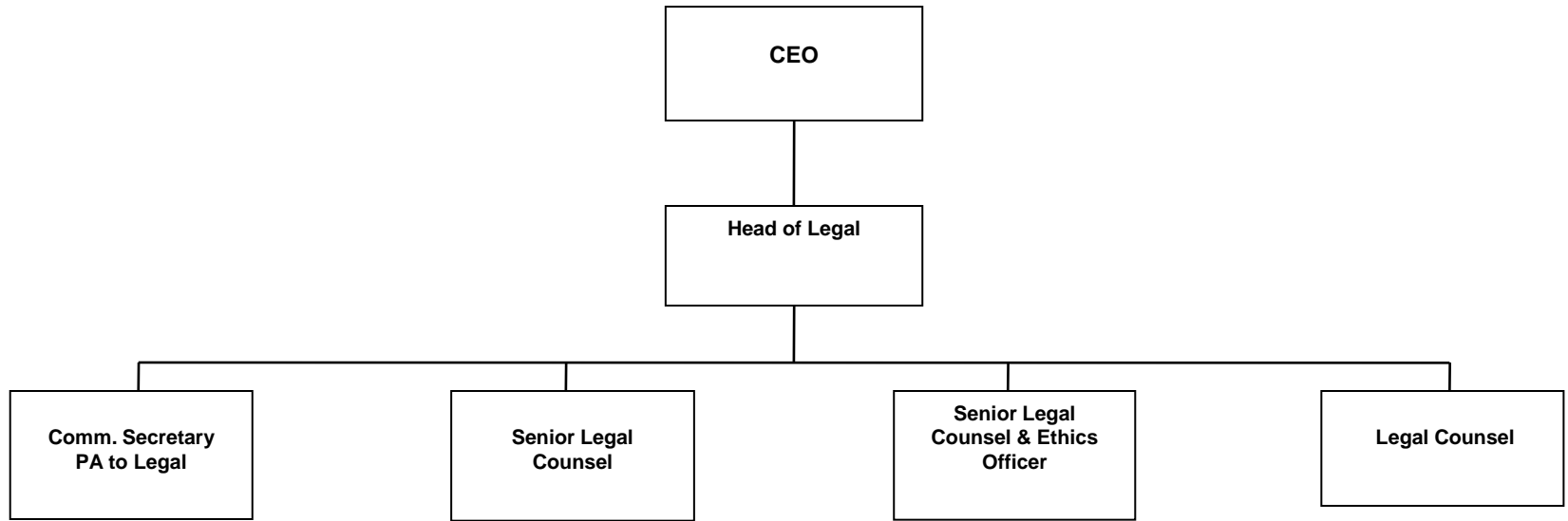


Human Resources Division

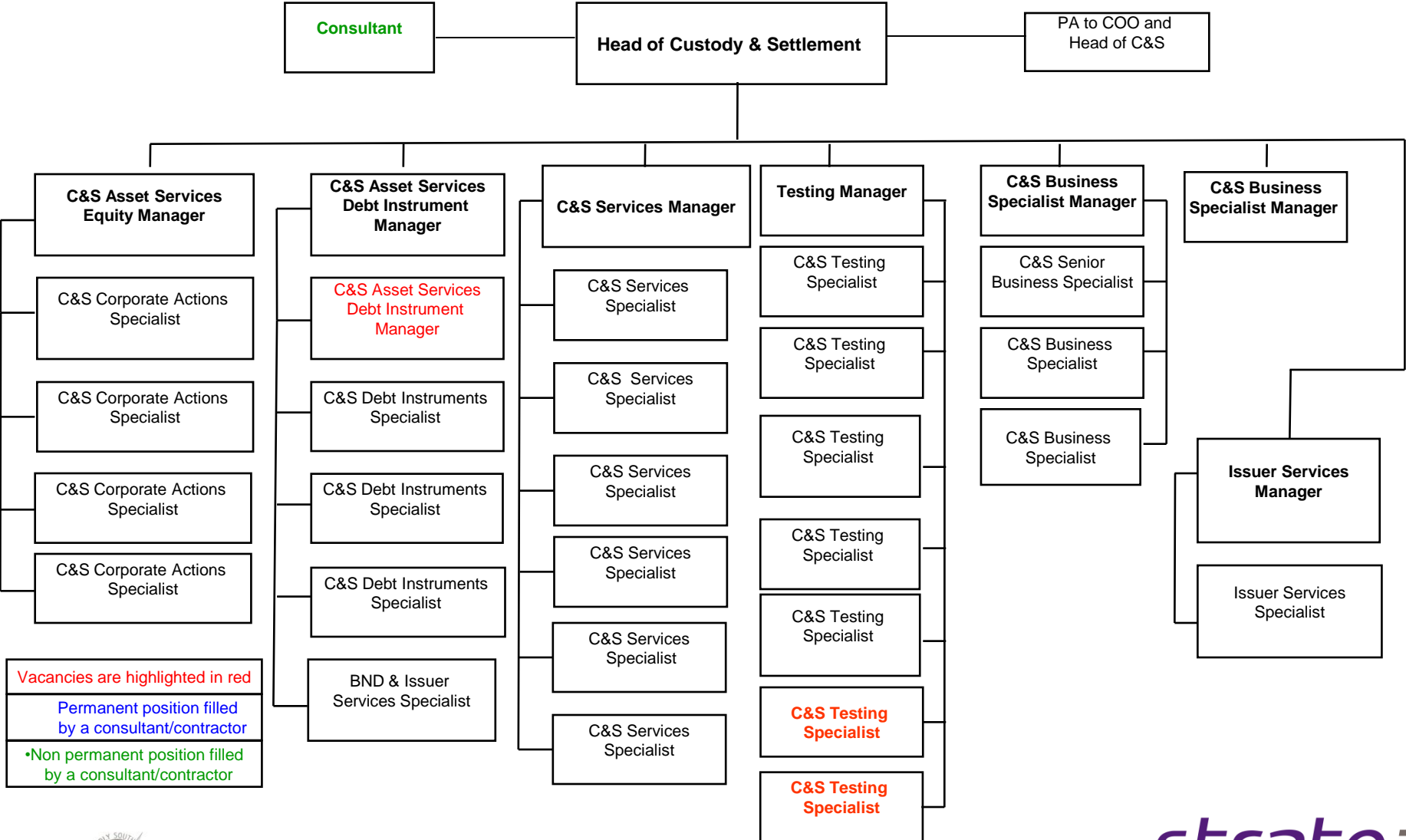


Risk Division





CUSTODY & SETTLEMENT SERVICES STRUCTURE

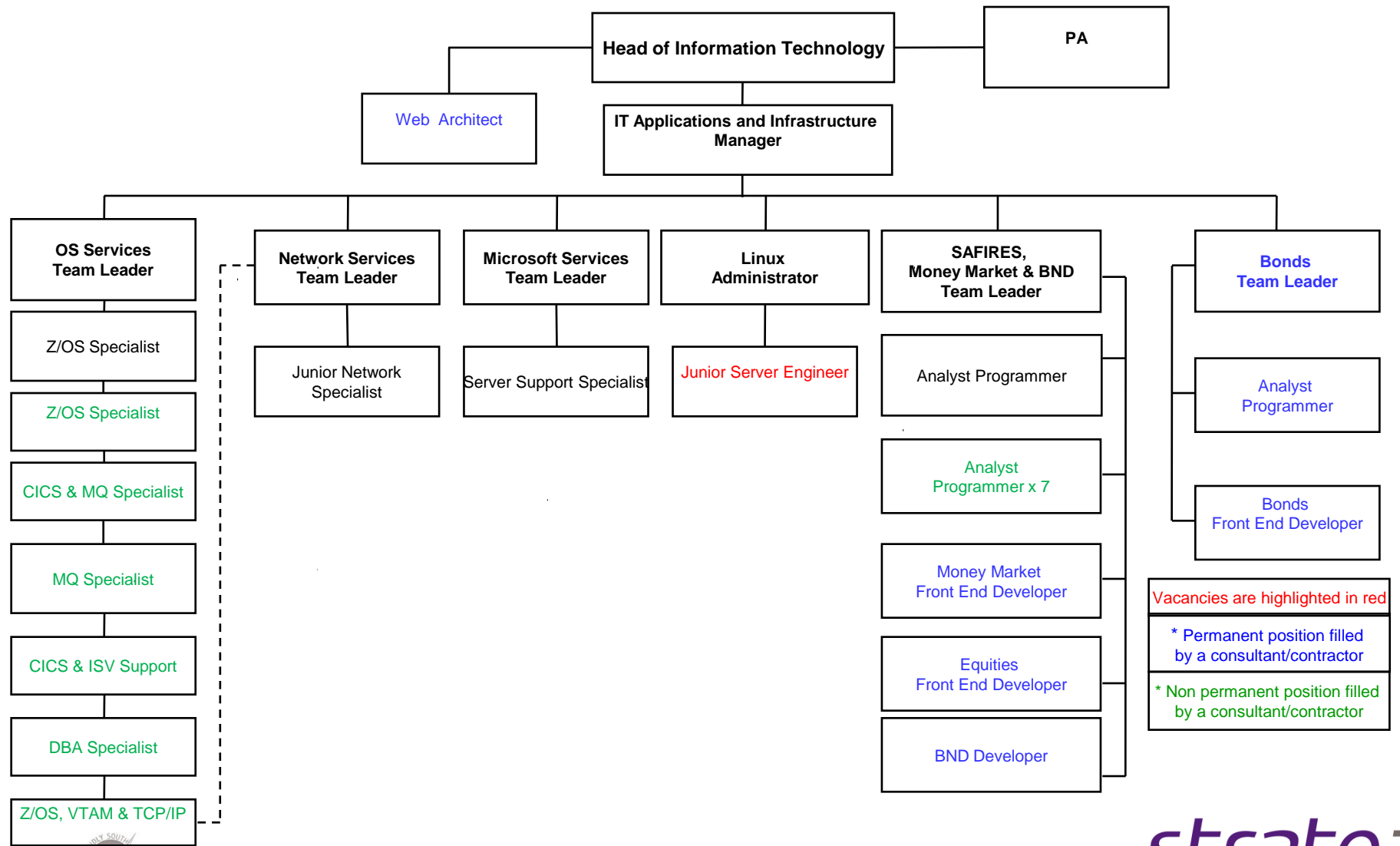


Vacancies are highlighted in red
 Permanent position filled by a consultant/contractor
 •Non permanent position filled by a consultant/contractor



INFORMATION TECHNOLOGY STRUCTURE

(IT Applications and Infrastructure)



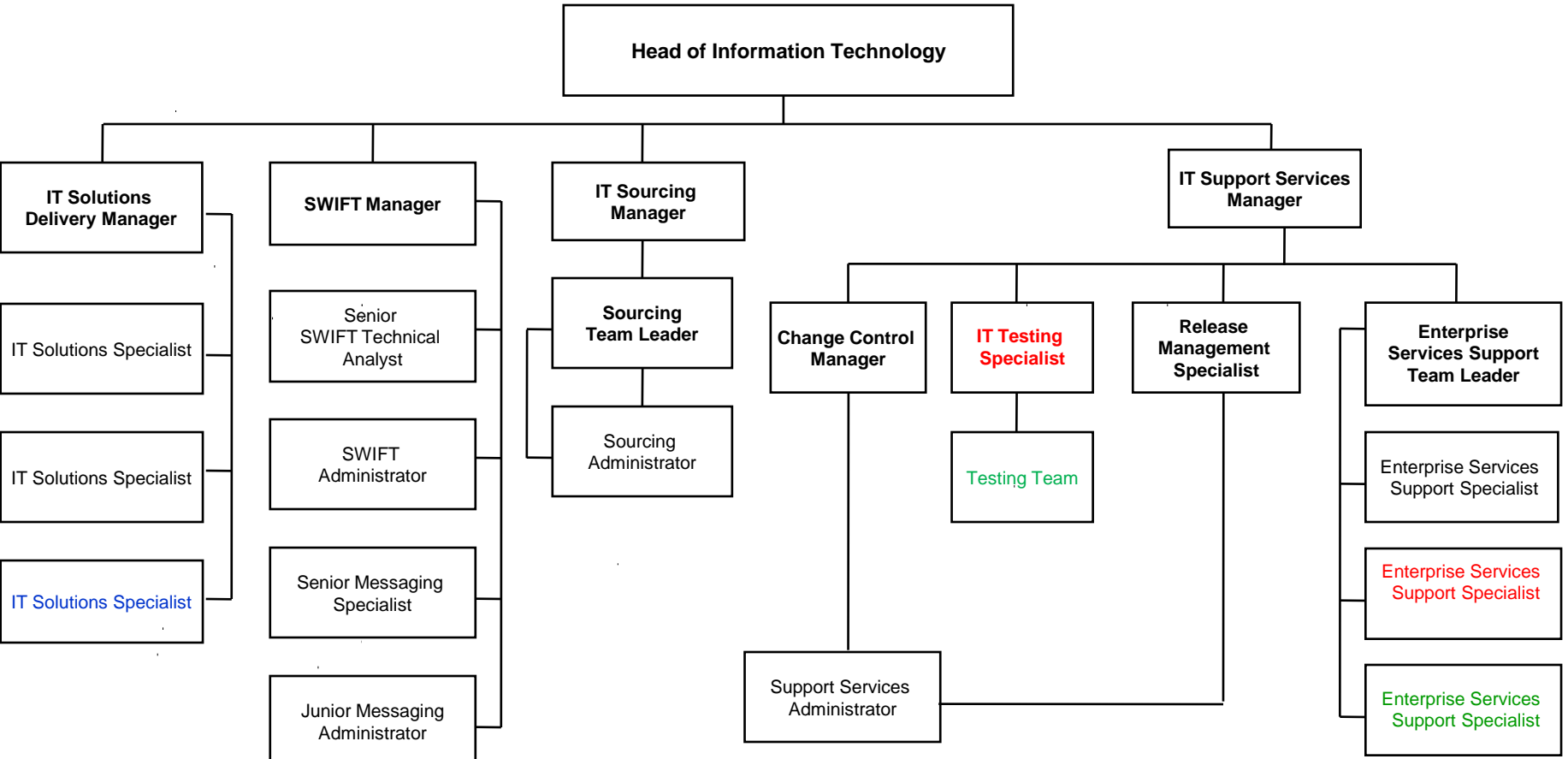
Vacancies are highlighted in red

* Permanent position filled by a consultant/contractor

* Non permanent position filled by a consultant/contractor



INFORMATION TECHNOLOGY STRUCTURE (Operations; Support Services; Sourcing)



Vacancies are highlighted in red

* Permanent position filled by a consultant/contractor

* Non permanent position filled by a consultant/contractor

